

Westview School Development Plan 2025-2026



Message from the Principal

Welcome to Westview School's 2025–2026 Development Plan. This plan outlines our continued commitment to creating a rich and supportive learning environment for all students. A strong focus on numeracy and literacy remains central to our work. By continuing to strengthen these areas, we are helping students develop the ability to think critically, express themselves clearly, and confidently navigate their academic journey.

Well-being also remains a top priority in our school community. We recognize that students are better able to learn, grow, and reach their full potential when they feel safe, supported, and healthy. Supporting well-being means creating an environment where students feel a strong sense of belonging, where relationships are nurtured, and where emotional and social needs are acknowledged and addressed. We are also committed to integrating Indigenous knowledge and perspectives into our programming. Honouring and embedding Indigenous Ways of Knowing across subject areas enriches learning for all students and supports a more inclusive, reflective educational experience.

Through this well-rounded approach, we strive to foster a school community where every learner can grow, feel valued, and experience success.



Mrs. Tanya Neuman - Westview School Principal



Our Vision

Our students possess the confidence, resilience, insight, and skills required to thrive in, and positively impact, the world.

We assure supportive learning environments, meaningful experiences and healthy relationships that create opportunities to develop resilience, to gain diversity in perspectives and to achieve enduring success

OUR ULTIMATE GOAL: STUDENT SUCCESS AND WELL-BEING



Our Context

Westview School is a growing K-9 school situated in Stony Plain, Alberta. With the continued growth of our community we anticipate ongoing growth in our student population over the next few years. Currently, Westview serves approximately 600 students and also provides Early Education programming to another 20 students. Building a strong school community is key as we work collaboratively with all of our stakeholders (students, staff, parents and community members) to create a positive learning environment that fosters trusting relationships, pride in accomplishments and develops life-long learners. At Westview we are proud of our wonderful staff and parent volunteers who are committed to student success and well-being. Our staff are committed to supporting all learners and our active School Council and fundraising society enrich our school community.





Key Areas of Focus



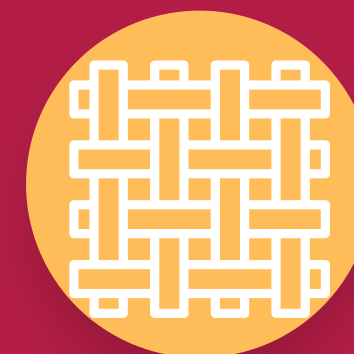
**STUDENT
WELL-BEING**



**LITERACY
DEVELOPMENT**

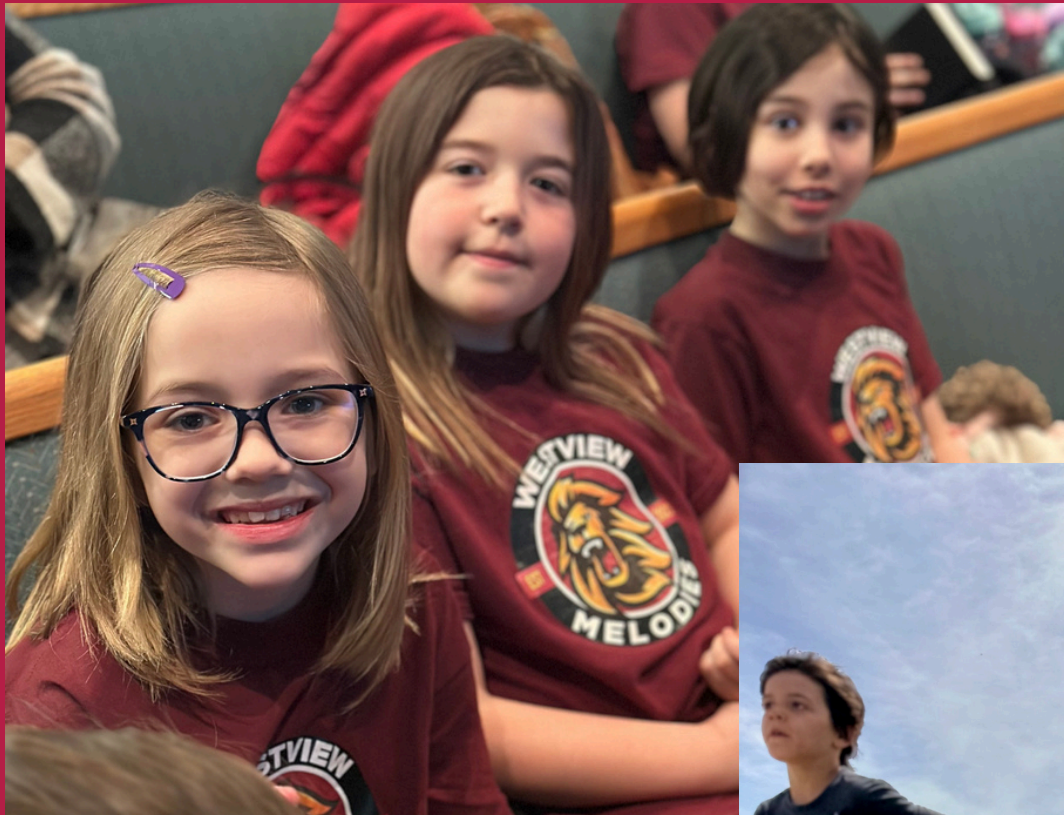


**NUMERACY
DEVELOPMENT**



**INDIGENOUS WAYS
OF KNOWING**

STUDENT WELL-BEING



Student well-being continues to be a key focus for our school as we create a positive community for students to grow and thrive. We believe that there is a place for everyone to feel connected in our building and a valued and contributing member of our school community.

Some of the ways we aim to achieve this goal:

- Extra Curricular Activities and Clubs such as Running, Choir, Various Sports teams (Gr. 6–9), Drama, D & D club, Chess Club, Art Clubs, etc.
- Student Leadership program connected to the school and community. Expanding involvement with the greater community and having students meaningfully connect and purposefully contribute to our school community.
- Partnership with our division nutrition initiative and community partnerships promoting healthy eating to provide breakfast/lunches for our students.
- Access to our full time School Counsellor, as needed, for students K–9 and continued access to small group targeted programs (eg Rainbows, Social Skills Groups, etc).
- Intentional programming that supports diverse learning needs.
- Helping students develop healthy use of personal technology devices; allowing them to be present and engage fully in their learning through clear policies and expectations.
- Involvement of our School Council and parents who are an integral part of our school community.

Measures of Student Well-Being

- Alberta Education Assurance Measures
- Counsellor referral data
- Parent and student surveys
- Student involvement in school activities
- Student attendance data
- Evidence of students positively contributing to the school community



Literacy Development



Expanding success in literacy: We've seen encouraging growth in our reading results and remain committed to increasing the number of students reading at or above grade level. Building on this momentum, we will also place greater emphasis on developing consistent and effective writing practices across all classrooms to support student literacy more broadly.

Strategies to achieve this goal:

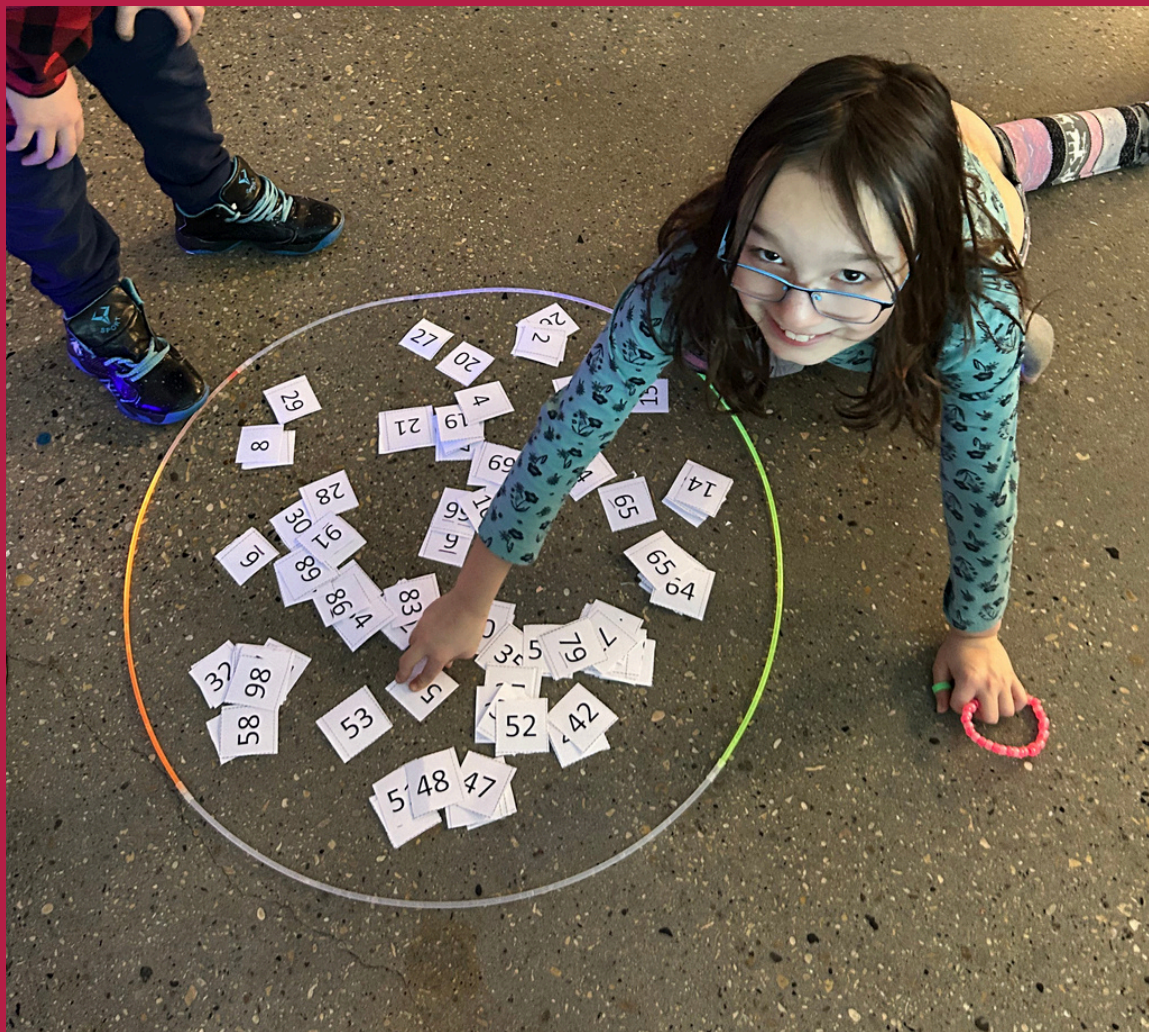
- As a school we continue to engage in school-wide assessments to capture where students are at. Focusing on data collection and ongoing analysis to develop an understanding of student strengths and areas for growth.
- Prioritizing school-based literacy leads to support literacy work in classrooms.
- Focus on small-group, targeted instruction in classrooms.
- Ensuring classrooms are literacy rich environments and teachers have access to resources.
- Embedded collaborative time for teachers to analyze student results and target programming.
- Continued implementation of the PSD writing continuum across Grade 1-9 classes and aligning writing resources to support this work.
- Continued Professional Development to support curriculum implementation.

Measures of Literacy Success

- Reading benchmarks and screens at the beginning and end of the year as outlined by Alberta Education and Parkland School Division
- Fountas and Pinnell reading assessment (Grade 1-6)
- RCAT (Grade 7-9)
- Words Their Way assessment
- Benchmark writing assessments in the fall and spring (Grade 1-9)
- PAT results
- Growing confidence for students in reading and writing abilities



Numeracy Development



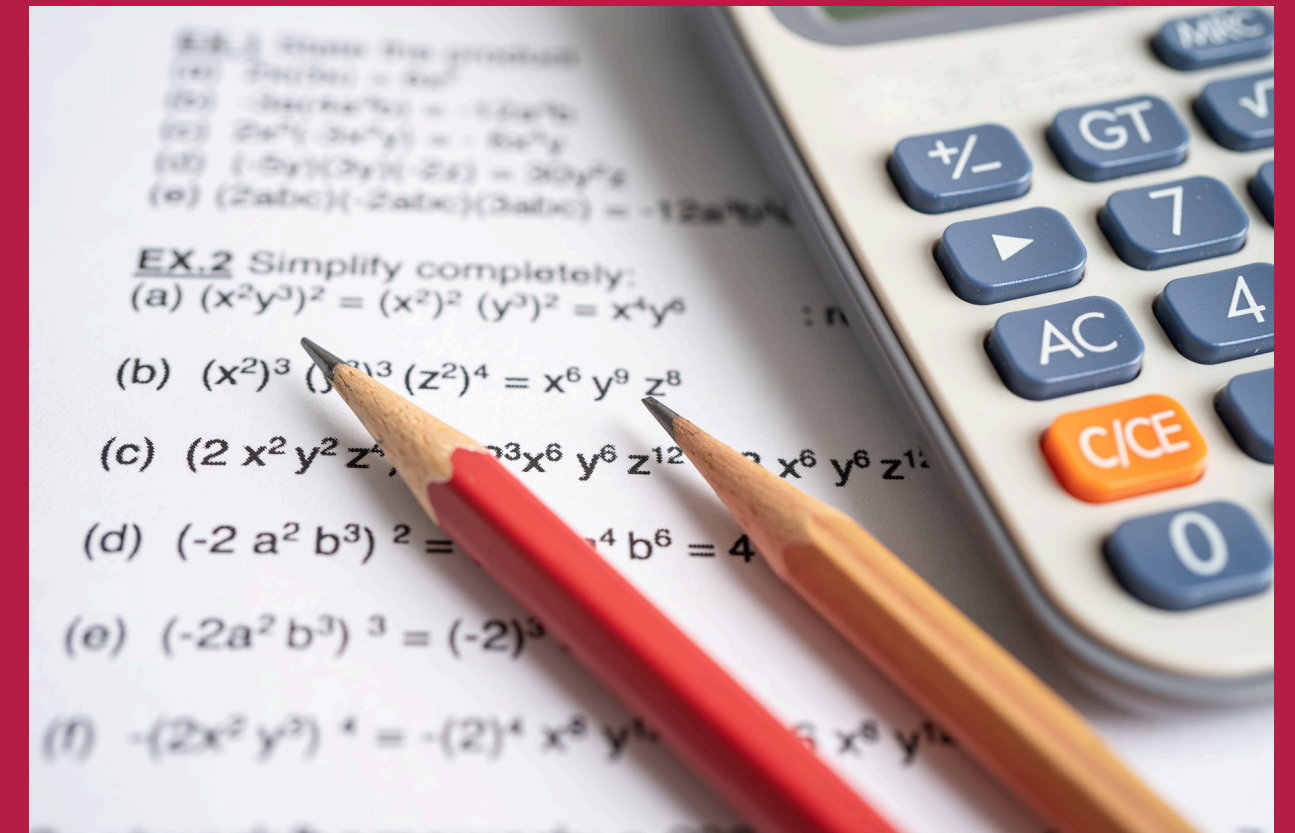
Expanding success in numeracy: Our goal is to continue to increase engagement and confidence in math to increase student understanding and success in numeracy.

Strategies to achieve this goal:

- Continued support for teachers with implementation of curriculum through professional development and collaborative planning time for teachers (K-6).
- Focusing on data collection and ongoing analysis to develop an understanding of student strengths and gaps that will be used to inform and drive instruction.
- Prioritizing school-based numeracy leads to support the work in classrooms and work collaboratively with teachers.
- Prioritizing small group instruction practices in math classrooms (K-9).
- Distribution of hands on manipulatives in all classrooms to support learning.
- Focus on conceptual numeracy understanding through fact fluency development, number talks, collaborative problem solving, and counting collections.
- Focused attention on the philosophy of building thinking classrooms where students are engaged in collaborative problem solving.

Measures of Numeracy Success

- Students develop and demonstrate confidence in numeracy concepts
- Elk Island Numeracy Screen Data (beginning , middle and end of year)
- Early Years Numeracy Interview
- Grade 6 & 9 PAT data
- Assurance Measures



Indigenous Perspectives and Ways of Knowing



Students receive an enriched educational experience when Indigenous knowledge systems are incorporated into schools. As an extension of student well-being, staff will demonstrate an understanding of Indigenous perspectives in order to support Indigenous students' success and well-being.

Strategies to achieve this goal:

- Month long artist in residence program with Angela Hall that will incorporate Indigenous teachings and art with all students.
- To incorporate Indigenous ways of knowing into curricular outcomes through meaningful and authentic teaching activities.
- Continued involvement in PSD's Elder in Residence program and bringing in other guests and community members to share their knowledge.
- Working closely with Westview's Indigenous Liaison and PSD's Indigenous Facilitator to support staff and student learning.
- Expanding Indigenous resources to support classroom learning.
- Continuing to acknowledge the National Day for Truth and Reconciliation, Metis Week, and National Indigenous People's Day, as well as whole school cultural celebrations.

Indigenous Perspectives and Ways of Knowing Measures of Success

- Evidence of authentic learning opportunities that incorporate Indigenous perspectives and ways of knowing across content areas
- Positive relationships with community members
- Increased attendance rates for Indigenous learners
- Grade 6 & 9 PAT data



Westview Professional Learning 2025-2026

During designated PD days, staff will engage in professional development connected to the areas of focus as outlined in our school development plan. The learning is supported by our literacy and numeracy leads, division facilitators and Westview staff working collaboratively to embed strong instructional practices that will increase student learning outcomes. Literacy and numeracy leads are provided time throughout the week to support teachers in this work on an ongoing basis.

Student well-being will also be a priority for professional development as we engage in conversations and learning that center around community, equity and belonging and supporting social-emotional learning. We will continue to deepen our understanding of Indigenous teachings, with a focus on land-based learning, integration of Indigenous art, and fostering meaningful cultural connections within instructional practices.

