



Westview School Development Plan 2024-2025



Message from the Principal



Welcome to Westview School's 2024-2025 Development Plan. This document is a roadmap designed to enhance the learning experience of our students. As we embark on this journey, we recognize the significance of numeracy and literacy initiatives, two fundamental pillars that lay the foundation for academic success and lifelong learning at Westview School. By continuing to prioritize these essential skills, we aim to empower our students with the ability to comprehend, communicate, and analyze information effectively. Additionally, we place a strong emphasis on school wellness, recognizing the integral connection between physical and mental well-being and academic achievement. We also recognize the value in weaving Indigenous knowledge systems into programming as it enriches student experiences. We aim to ensure that implementation of Indigenous Ways of Knowing is evident across the programs of study. Through a holistic approach to education, we aspire to cultivate a supportive environment that nurtures the growth and development of every student, enabling them to thrive academically, emotionally, and socially.



Mrs. Tanya Neuman - Westview School Principal



Our Vision

Our students possess the confidence, resilience, insight, and skills required to thrive in, and positively impact, the world.

We assure supportive learning environments, meaningful experiences and healthy relationships that create opportunities to develop resilience, to gain diversity in perspectives and to achieve enduring success

OUR ULTIMATE GOAL: STUDENT SUCCESS AND WELL-BEING



Our Context

Westview School is a growing K-9 school situated in Stony Plain, Alberta. With the continued growth of our community, we had the privilege of starting the 2023-2024 school year in a brand new building. Currently, Westview serves approximately 600 students and also provides Early Education programming to another 20 students. Building a strong school community is key as we work collaboratively with all of our stakeholders (students, staff, parents and community members) to create a positive learning environment that fosters trusting relationships, pride in accomplishments and develops life-long learners. At Westview we are proud of our wonderful staff and parent volunteers who are committed to student success and well-being. Our staff are committed to supporting all learners and our active School Council and fundraising society enrich our school community.





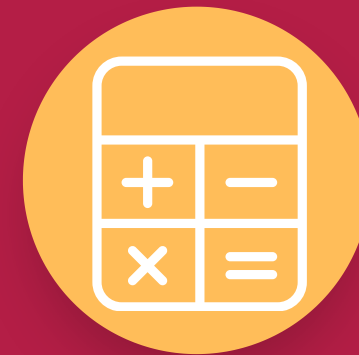
Key Areas of Focus



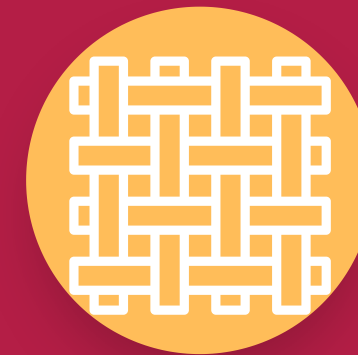
**STUDENT
WELL-BEING**



**LITERACY
DEVELOPMENT**



**NUMERACY
DEVELOPMENT**



**INDIGENOUS WAYS
OF KNOWING**

STUDENT WELL-BEING



Student well-being continues to be a key focus for our school as we create a positive community for students to grow and thrive. We believe that there is a place for everyone to feel connected in our building and a valued and contributing member of our school community.

Some of the ways we aim to achieve this goal:

- Supporting Extra Curricular Activities and Clubs such as Running, Choir, Various Sports teams (Gr. 6-9), Drama, Knitting and Crocheting, D & D club, GSA, Art Clubs, etc.
- Student Leadership program connected to the school and community. Expanding involvement with the greater community.
- Partnership with our division nutrition initiative and community partnerships promoting healthy eating to provide breakfast/lunches for our students
- Access to our Full time School Counsellor, as needed, for students K-9.
- Continued access to small group targeted programs (eg Rainbows, SNAP, Social Skills Groups, etc).
- Intentional programming that supports diverse learning needs.
- Helping students develop healthy use of personal technology devices; allowing them to be present and engage fully in their learning through clear policies and expectations.
- Involvement of our School Council and parents who are an integral part of our school community.

Measures of Student Well-Being

- Alberta Education Assurance Measures
- Counsellor referral data
- Parent and student surveys
- Student involvement in school activities



Literacy Development



Expanding success in literacy: We have seen growth in our reading results and we continue to set a goal to increase the number of students that are reading at or above grade level. There will also be a stronger focus on establishing more consistent writing practices across our classrooms.

Strategies to achieve this goal:

- As a school we continue to engage in school-wide assessments to capture where students are at. Focusing on data collection and ongoing analysis to develop an understanding of student strengths and areas for growth.
- Prioritizing school-based literacy leads to support the work in classrooms.
- Focus on small-group instruction in classrooms.
- Ensuring classrooms are literacy rich environments and teachers have access to resources.
- Imbedded collaborative time for teachers to analyze student results and target programming.
- Continued implementation of the PSD writing continuum across Grade 1-9 classes and investing in writing resources to support this work.
- Professional Development to support curriculum implementation.

Measures of Literacy Success

- Reading benchmarks and screens at the beginning and end of the year as outlined by Alberta Education and Parkland School Division.
- Fountas and Pinnell assessment (Grade 1-6)
- QPAS (Kindergarten)
- RCAT (Grade 7-9)
- Benchmark writing assessments in the fall and spring (Grade 1-9)
- PAT results



Numeracy Development



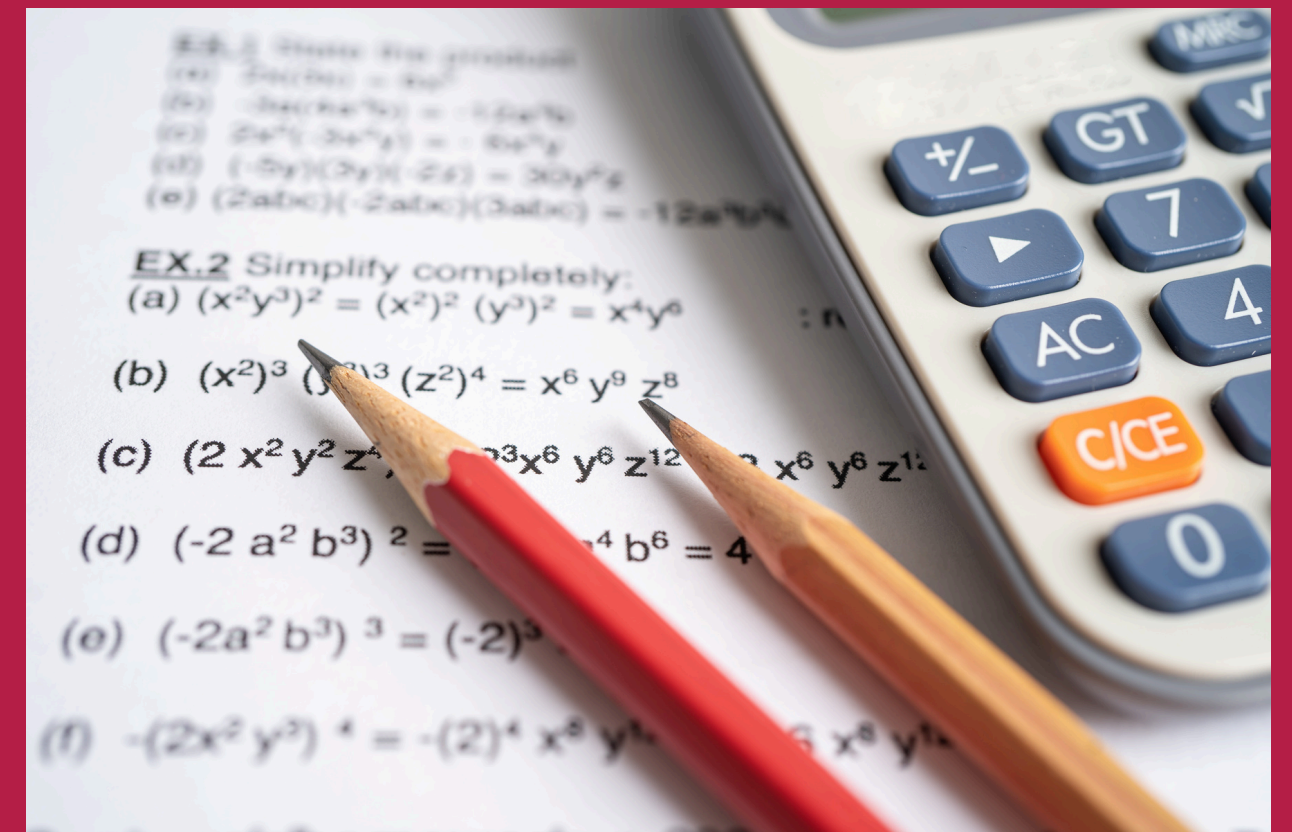
Expanding success in numeracy: Our goal is to continue to increase engagement and confidence in math to increase student success in numeracy.

Strategies to achieve this goal:

- Continued support for teachers with implementation curriculum through professional development
- Building small group instruction practices into math classrooms
- Continued professional development in "Building Thinking Classrooms" in Grades 6–9.
- Distribution of hands on manipulatives in all classrooms to support learning
- Focusing on data collection and ongoing analysis to develop an understanding of student strengths and areas for growth.
- Prioritizing school-based numeracy leads to support the work in classrooms.

Measures of Numeracy Success

- Elk Island Numeracy Screen Data - Grade 1-5
- MIPI data at the start and end of the year - Grades 6-9
- Early Years Numeracy Interview
- Grade 9 PAT data
- Assurance Measures



Indigenous Perspectives and Ways of Knowing



Students receive an enriched educational experience when Indigenous knowledge systems are incorporated into schools. As an extension of student well-being, staff will demonstrate an understanding of Indigenous perspectives in order to support Indigenous students' success and well-being.

Strategies to achieve this goal:

- Professional development for staff with a clear focus on Indigenous perspectives and ways of knowing.
- Continued involvement in PSD's Elder in Residence program
- Working closely with Westview's Indigenous Liaison and PSD's Indigenous Facilitator to support staff and student learning.
- Expanding Indigenous resources to support classroom learning
- Continuing to acknowledge the National Day for Truth and Reconciliation, Metis Week, and National Indigenous People's Day, as well as whole school cultural celebrations.

Westview Professional Learning 2024-2025

- During designated PD days, staff will engage in professional development connected to components of our school development plan. This may include a focus on literacy and numeracy pedagogy, learning about a particular aspect of Indigenous culture and weaving Indigenous ways of knowing into curricular content, or a focus on student and staff well-being.

