



Westview School Development Plan



Overview



Welcome to Westview School's Development Plan. This document is a roadmap designed to enhance the learning experience of our students. As we embark on this journey, we recognize the significance of numeracy and literacy initiatives, two fundamental pillars that lay the foundation for academic success and lifelong learning at Westview School. By prioritizing these essential skills, we aim to empower our students with the ability to comprehend, communicate, and analyze information effectively. Additionally, we place a strong emphasis on school wellness, recognizing the integral connection between physical and mental well-being and academic achievement. Through a holistic approach to education, we aspire to cultivate a supportive environment at Westview School that nurtures the growth and development of every student, enabling them to thrive academically, emotionally, and socially.





Our Vision

Our students possess the confidence, resilience, insight, and skills required to thrive in, and positively impact, the world.

We assure supportive learning environments, meaningful experiences and healthy relationships that create opportunities to develop resilience, to gain diversity in perspectives and to achieve enduring success

OUR ULTIMATE GOAL: STUDENT SUCCESS AND WELL-BEING



Our Context

Westview School, formerly known as Stony Plain Central School, is a K-9 school situated in Stony Plain, Alberta. With the continued growth of our community, we have the privilege of starting the 2023-2024 school year in a brand new building. In its inaugural year, Westview is slated to serve over 600 students and also provides Early Education programming to approximately 25 students. Building a strong school community is key as we work collaboratively with all of our stakeholders (students, staff, parents and community members) to create a positive learning environment that fosters trusting relationships, pride in accomplishments and develops life-long learners.





Key Areas of Focus



**STUDENT
WELL-BEING**



**LITERACY
DEVELOPMENT**



**NUMERACY
DEVELOPMENT**

STUDENT WELL-BEING

We are excited to continue developing a positive community for students to grow and thrive in our new space. We believe that there is a place for everyone to feel connected in our building and a valued and contributing member of our school community.

Some of the ways we aim to achieve this goal:

- Expanding Extra Curricular Activities and Clubs such as Running, Choir, Archery, Various Sports teams (Gr. 6-9), Drama, D & D club, GSA, Art Clubs, Indigenous clubs etc.
- Student Leadership program connected to the school and community
- Partnership with our division nutrition initiative and community partnerships promoting healthy eating to provide breakfast/lunches for our students
- Access to our School Counsellor as needed for students K-9.
- Continued access to small group targeted programs (eg Rainbows, SNAP, Social Skills Groups, etc).
- Helping students develop healthy use of personal technology devices; allowing them to be present and engage fully in their learning through clear policies and expectations.
- Involvement of our School Council and parents who are an integral part of our school community.



Measures of Student Well-Being

- Alberta Education Assurance Measures
- Counsellor referral data
- Parent and student surveys



Literacy Development



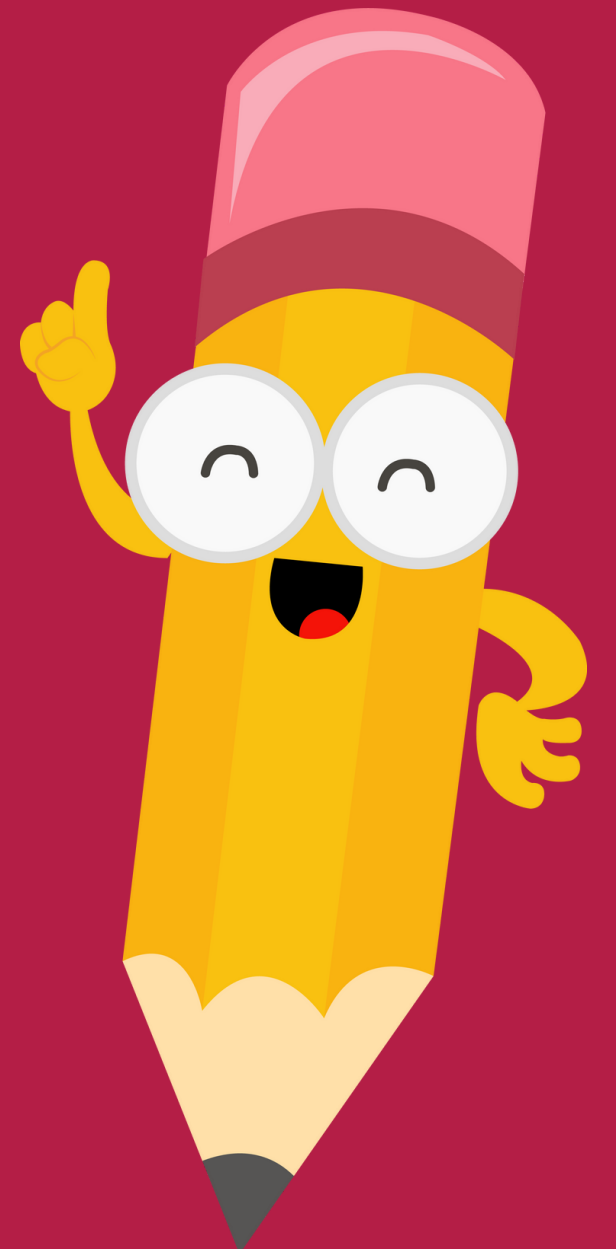
Expanding success in literacy: Our goal is to increase the number of students that are reading at or above grade level and to embed more consistent writing practices across our classrooms.

Strategies to achieve this goal:

- As a school we continue to engage in school-wide assessments to capture where students are at. Focusing on data collection and ongoing analysis to develop an understanding of student strengths and areas for growth.
- Prioritizing school-based literacy leads to support the work in classrooms.
- Focus on small-group instruction in classrooms.
- Ensuring classrooms are literacy rich environments and teachers have access to resources.
- Implementation of Collaborative Response Model to intervention focused on grade level teams.
- Implementation of the PSD writing continuum across Grade 1-9 classes and investing in writing resources to support this work.
- Professional Development to support new curriculum implementation.

Measures of Literacy Success

- Reading benchmarks and screens at the beginning and end of the year.
- Fountas and Pinnell assessment (Grade 1-6)
- QPAS (Kindergarten)
- RCAT (Grade 7-9)
- HLAT (Grade 1-9) for writing
- PAT results



Numeracy Development



Expanding success in numeracy: Our goal is to increase engagement and confidence in with math to increase student success in numeracy.

Strategies to achieve this goal:

- Supporting implementation of new curriculum through professional development
- Building small group instruction practices into math classrooms
- Continue professional development in "Building Thinking Classrooms" in Grades 6–9.
- Distribution of hands on manipulatives in all classrooms to support learning
- Focusing on data collection and ongoing analysis to develop an understanding of student strengths and areas for growth.
- Prioritizing school-based numeracy leads to support the work in classrooms.
- Implementation of Collaborative Response Model to intervention focused on grade level teams.

Measures of Numeracy Success

- MIPI data at the start and end of the year
- Early Years Numeracy Interview
- Grade 6 and 9 PAT data
- Assurance Measures



